

How to Make (and Read) a Flowchart

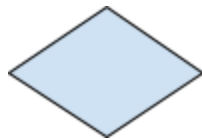
A flow chart is a graphical representation of a process. Each step in the process is described in a text box of a particular shape. The shape determines what the user is doing during that step:



Oval: Start or finish the process.



Rectangle: Do some part of the process.



Diamond: Make a decision.

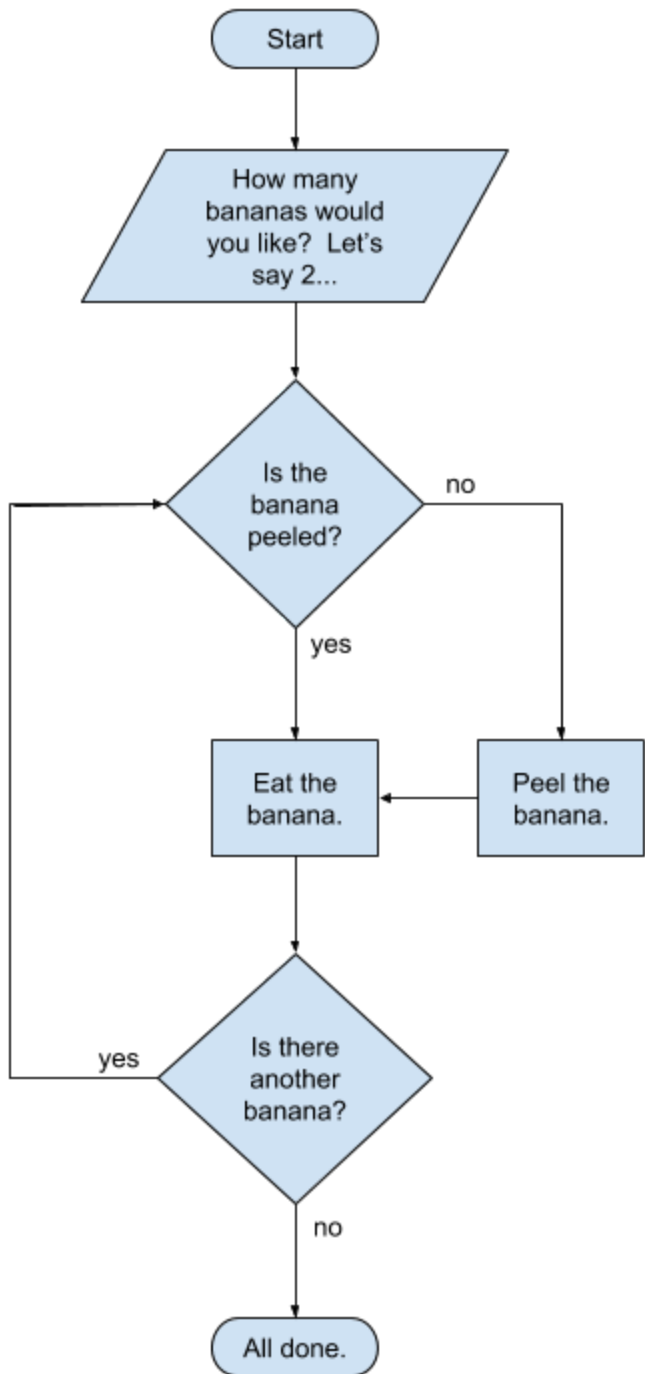


Parallelogram: Get or show some data.



Arrow: A connector used between shapes.

The user follows the arrows and shapes until they reach the end. There are many other shape options, but this is enough to get you started and handle most cases that you will encounter. A simple example follows on the next page, “How to Eat Bananas.”





This work is licensed under the Creative Commons Attribution 4.0 International License.
To view a copy of the license, visit <https://creativecommons.org/licenses/by/4.0/>.